

LASER TREE



R2

USER MANUAL

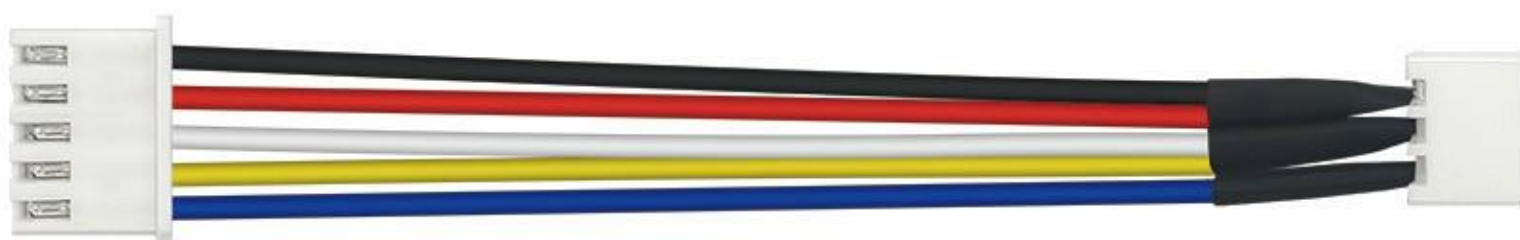
CONTENT

1	Packing List	1
2	Parameters	2
3	Outline Dimension	3
4	Sliding Plate	4
5	Driver Adapter	5
6	PIN Definiton	6
7	Connection	7
8	Engraving Focus Description	8
9	Safe Use & Maintenance	9

1. Packing List



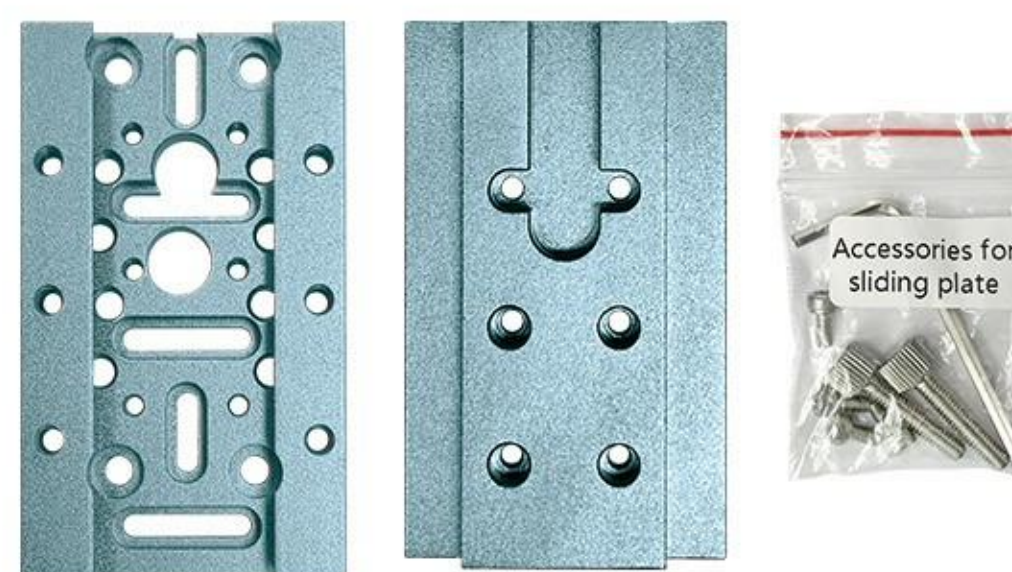
Laser Module



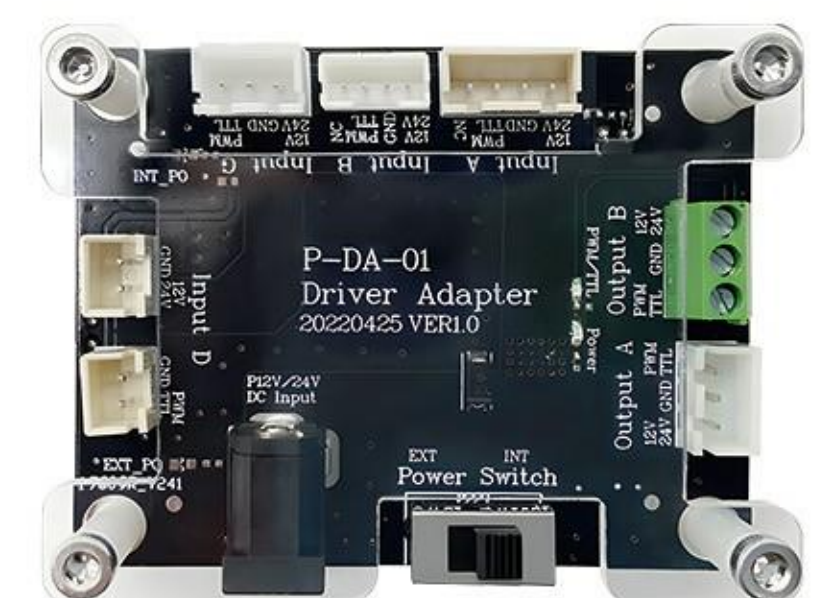
Input Cable



3PIN Cable



Sliding Plate

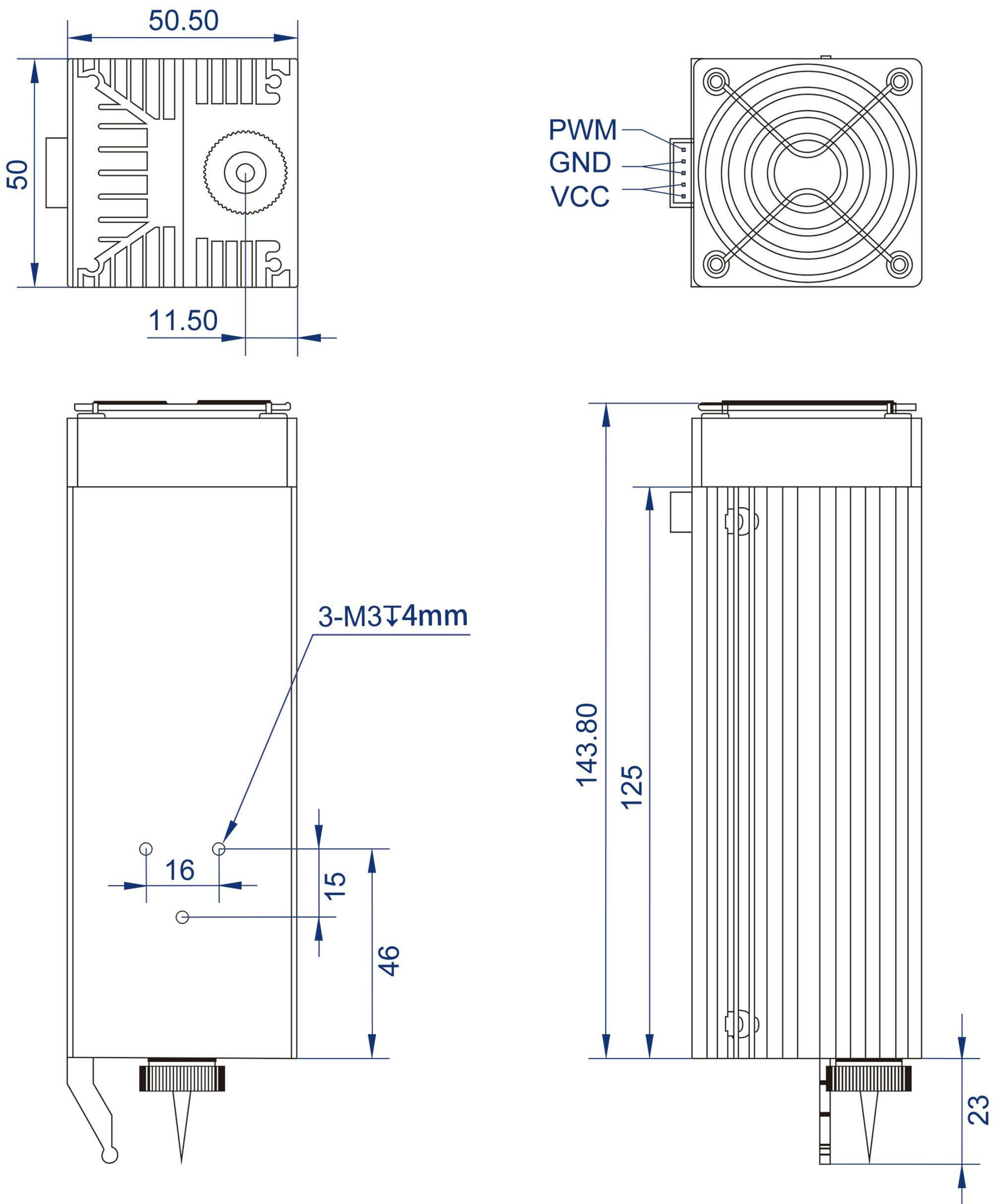


Driver Adapter

2. Parameters

Product Name	Engraving Module
Wavelength	1064nm±1nm
Optical Power	2W
Input	DC 24V 4A
Input Port	XHB2.54 5PIN
Operation Mode	Pulsed Laser
Focus Length	23mm
Spot Size	0.03mm
PWM Modulation	0-5, V0-5kHz
Cooling Mode	Air-cooling
Operating Temperature	0-60°C
Module Net Weight	448g
Module Size	50*50.5*143.8mm

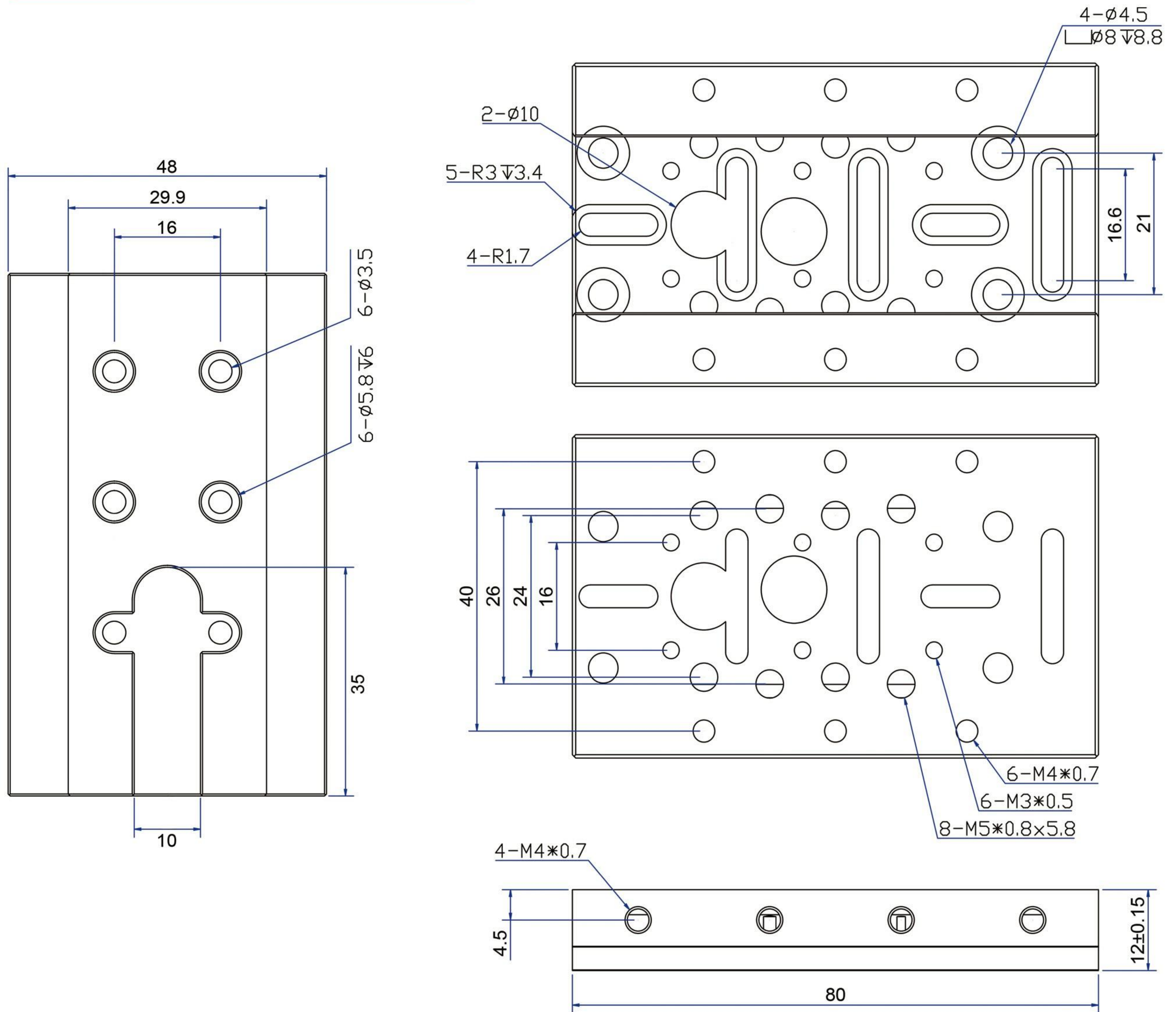
3. Outline Dimension (Unit: mm)



4. Sliding Plate

Multiple holes bring you widely installation compatibility.

Outline dimension (Unit: mm)



Accessories for sliding plate



M3x6 Fasten screw*4

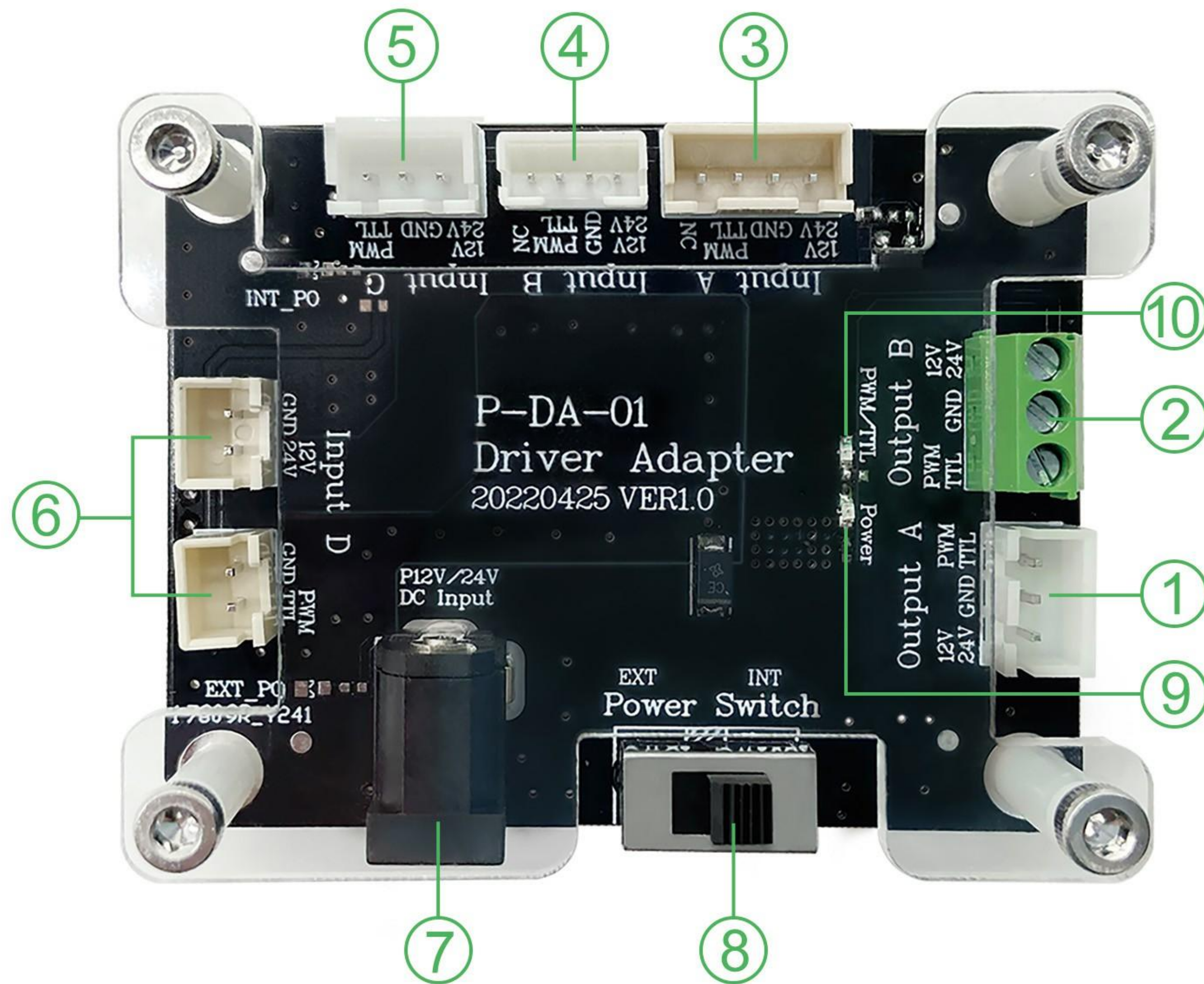


M4x20 Fasten screw*2



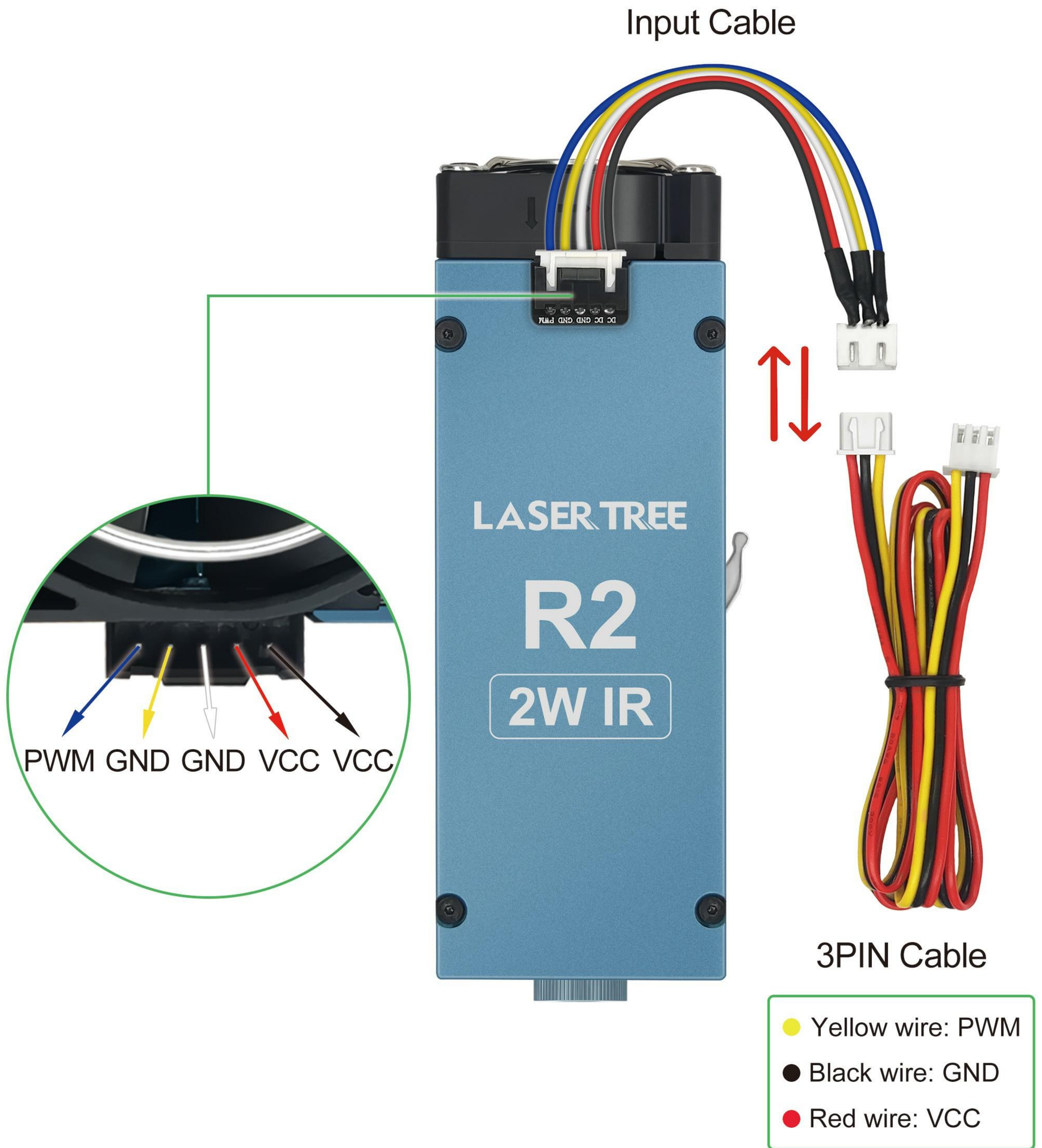
2.5mm L-wrench

5. Driver Adapter



① Output A: 3PIN connector	② Output B: 3PIN connector
③ Input A: 4PIN connector	④ Input B: 4PIN connector
⑤ Input C: 3PIN connector	⑥ Input D: 2PIN connector
⑦ DC Input: 12V or 24V power adapter	
⑧ Power Switch: • EXT→External power supply • INT→Internal power supply	
⑨ Power indicator: It is red when the power cable is connected correctly.	
⑩ TTL/PWM indicator: It is green when the TTL/PWM cable is connected correctly.	

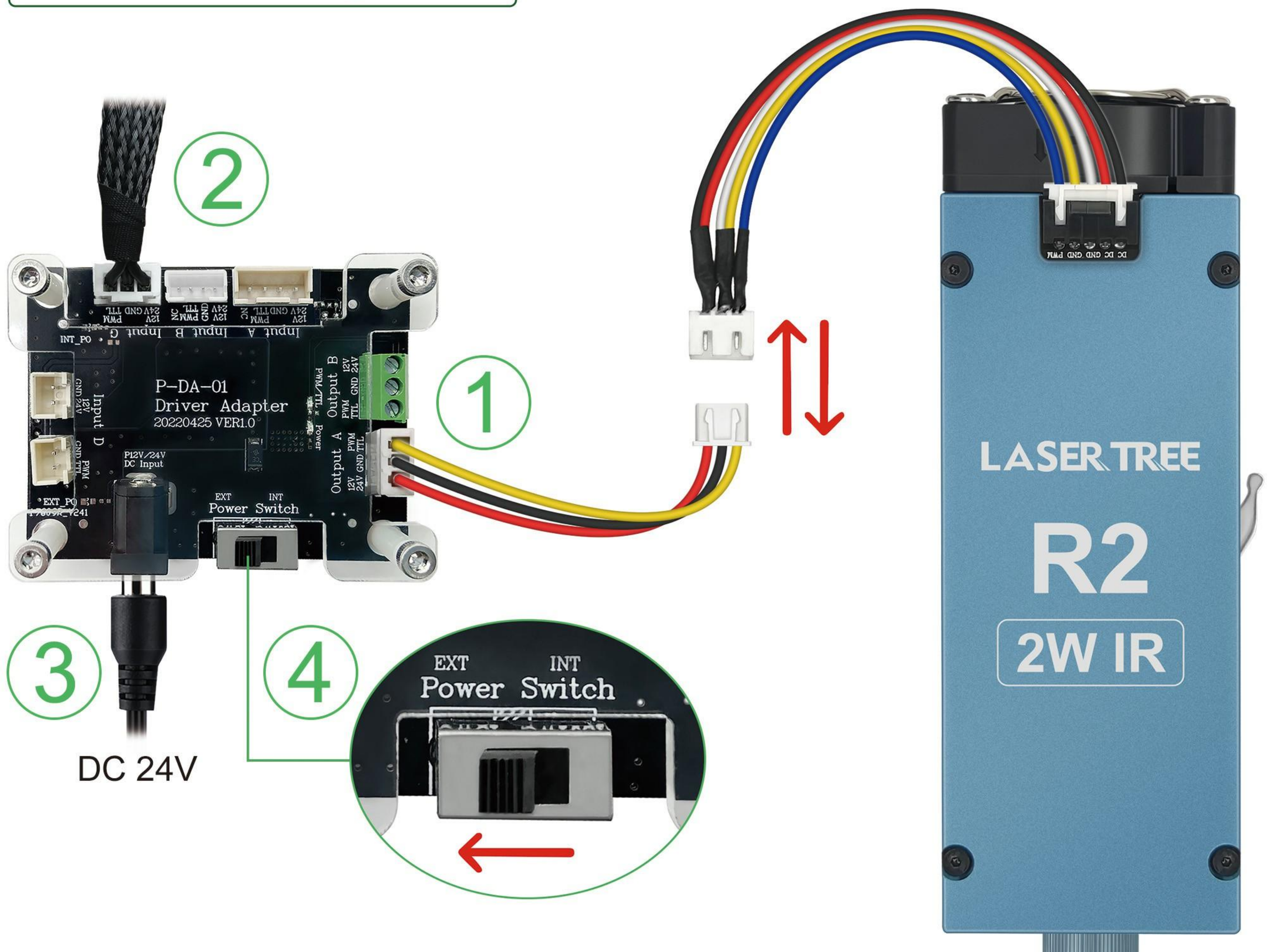
6. PIN Definiton



7. Connection

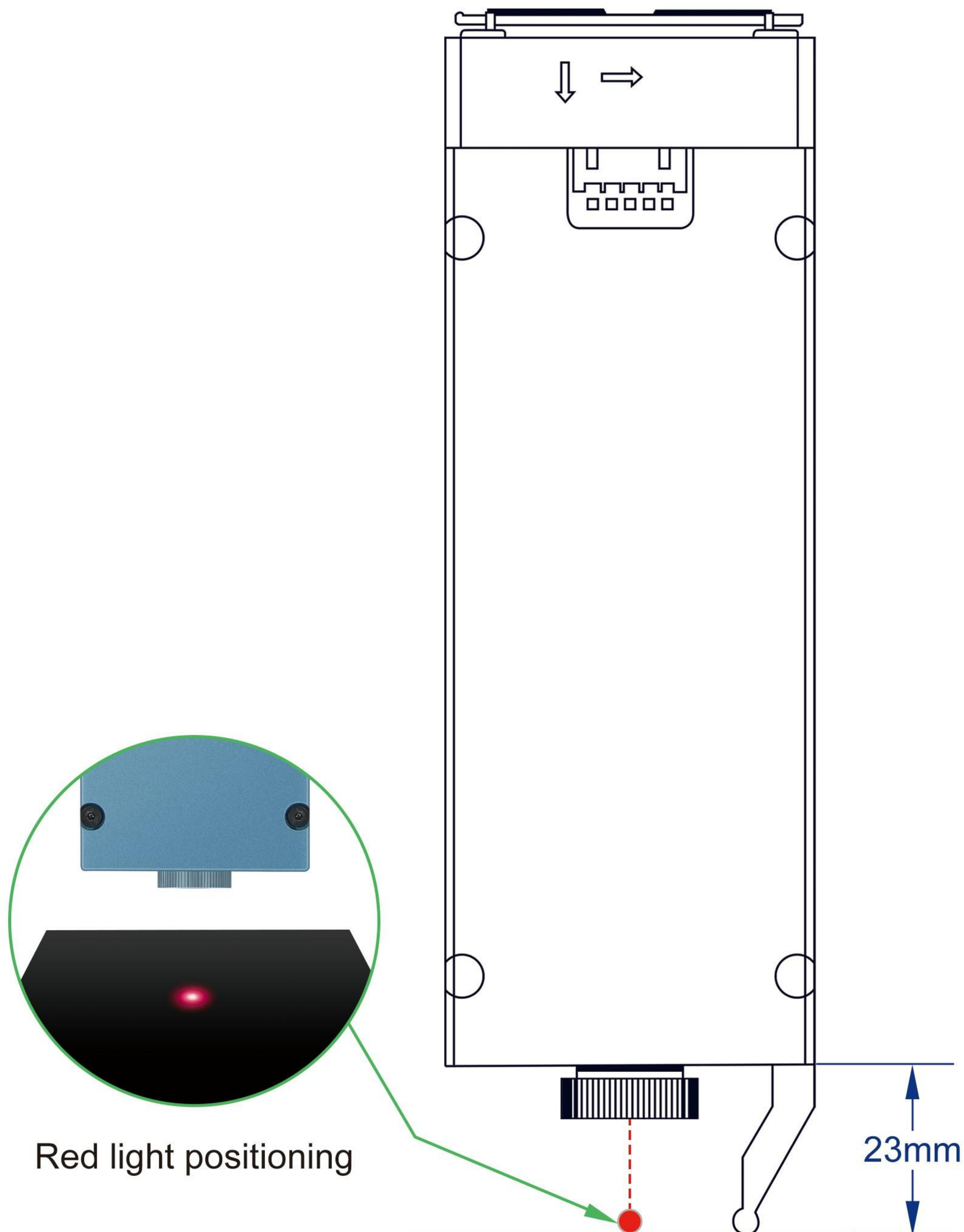
- ① Connect 5pin end of the input cable to the laser module and the other end of the input cable to the 3pin cable. Then connect the 3pin cable to the output port on the driver adapter.
- ② Connect the engraver output cable to the corresponding input port of the drive adapter.
- ③ Connect the adapter to the DC input port of the drive adapter.
- ④ Switch to Ext (external power) mode on the drive adapter and then start to use the laser module.

Connection diagram



8. Engraving Focus Description

The R2 engraving module has a focal length of 23mm and is equipped with a fixed focus lever and a red light positioning device so that the engraving position can be easily positioned.



9. Safe Use & Maintenance



Laser can damage a person's skin. please do not expose your skin directly to the lase.



Children or teenagers are strictly prohibited from using the module alone.



Please wear laser goggles to protect your eyes when you use this laser module.



This module doesn't support hot plug. Hot plug may cause damage to the module.



When the laser module is not used for a long time, please ensure that the lens is not polluted by dust.

* For more information about maintenance, please contact us at lasertree@micost-optotech.com.



LASER TREE

Enjoy pleasure of DIY

FDA FC CE RoHS  

MADE IN CHINA